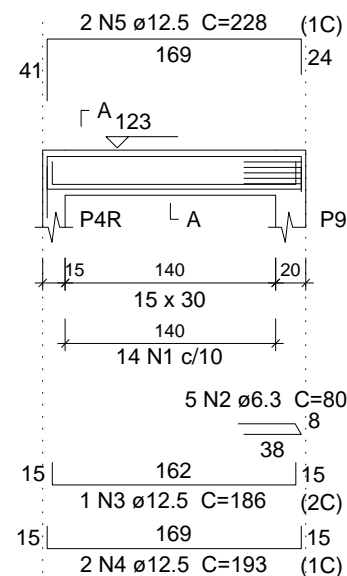
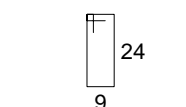
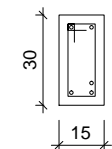


V5
ESC 1:50

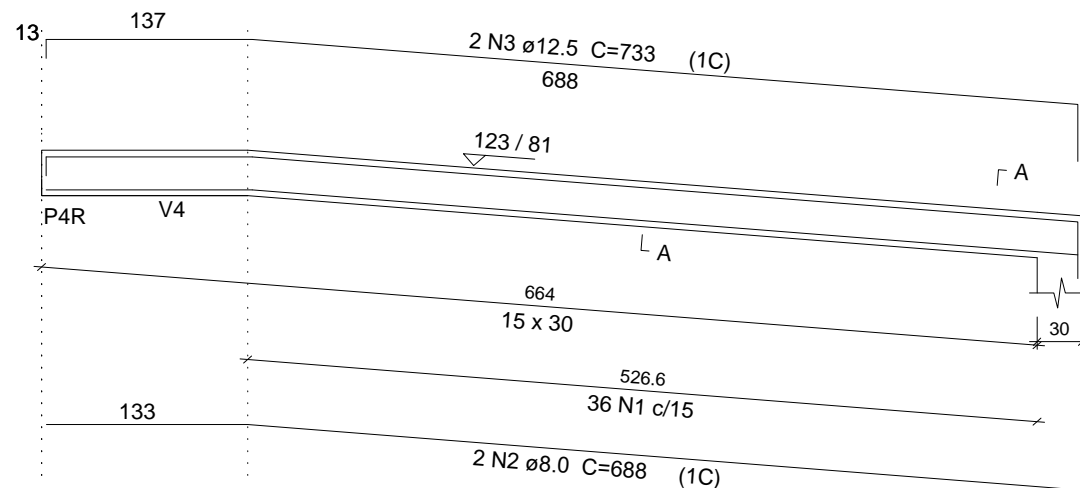


SEÇÃO A-A
ESC 1:25

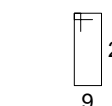
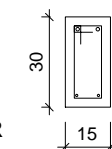


14 N1 ø5.0 C=77

V6
ESC 1:50



SEÇÃO A-A
ESC 1:25



36 N1 ø5.0 C=77

Relação do aço

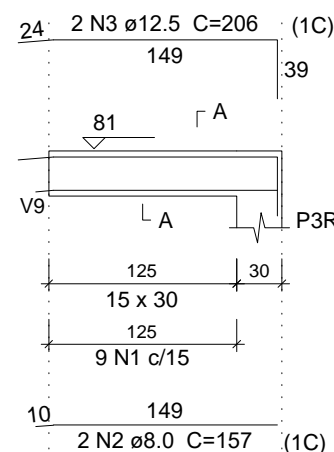
ELEMENTO	AÇO	N	DIAM (mm)	QUANT (Barras)	UNIT (cm)	C.TOTAL (cm)
V5	CA60	1	5.0	14	77	1078
	CA50	2	6.3	5	80	400
	CA50	3	12.5	1	186	186
	CA50	4	12.5	2	193	386
	CA50	5	12.5	2	228	456
V6	CA60	1	5.0	36	77	2772
	CA50	2	8.0	2	688	1376
	CA50	3	12.5	2	733	1466
V7	CA60	1	5.0	9	77	693
	CA50	2	8.0	2	157	314
	CA50	3	12.5	2	206	412
V8	CA60	1	5.0	14	77	1078
	CA50	2	6.3	5	80	400
	CA50	3	12.5	1	186	186
	CA50	4	12.5	2	193	386
	CA50	5	12.5	2	228	456

Resumo do aço

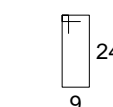
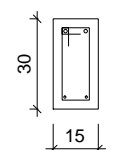
AÇO	DIAM (mm)	C.TOTAL (m)	PESO (kg)
CA50	6.3	8	2
	8.0	16.9	6.7
	12.5	39.4	37.9
CA60	5.0	56.3	8.67
PESO TOTAL (kg)			
CA50		46.5	
CA60		8.67	

Volume de concreto (C-30) = 0.54 m³
Área de forma = 8.98 m²

V7
ESC 1:50

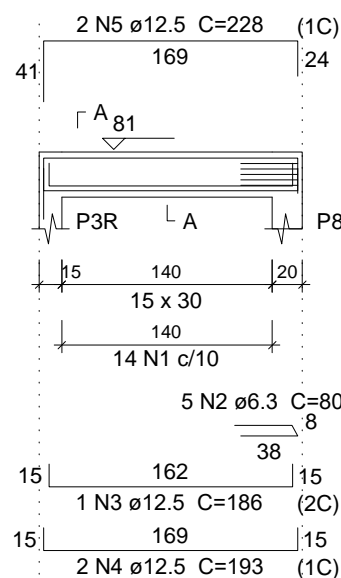


SEÇÃO A-A
ESC 1:25

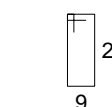
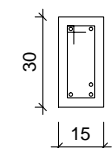


9 N1 ø5.0 C=77

V8
ESC 1:50



SEÇÃO A-A
ESC 1:25



14 N1 ø5.0 C=77



PREFEITURA MUNICIPAL DE
VÁRZEA GRANDE
amar • cuidar • acreditar

PREFEITURA MUNICIPAL DE VÁRZEA GRANDE

Av. Castelo Branco, Espaço Municipal, 2500 - Centro Sul, Várzea Grande/MT

CEP 78125-700 - Fone/Fax: 65 3688 8000

RESPONSÁVEL TÉCNICO

AUTOR DO PROJETO

MARCELO FRANÇA MARTINS
ENGENHEIRO CIVIL
CREA:1014629756D-GO

PROJETO:

ESTRUTURAL - RAMPA ACESSO ADM.

LOCALIZAÇÃO: AVENIDA CASTELO BRANCO, ESQUINA
COM A RUA CAPITÃO COSTA - VÁRZEA
GRANDE MT

ASSUNTO:

ARMAÇÃO DE VIGAS

DATA

17/01/2018

UNIDADE:

METRO

ESCALA:

CENT

FOLHA:

02/04